

CAMPUS DE L' UNIVERSITE DE BOURGOGNE

CONSTRUCTION D' UNE SALLE MODULABLE

Maitre d' Ouvrage : **CONSEIL REGIONAL DE BOURGOGNE** 17 Boulevard de la Tremolle 21000 DIJON

Architecte : **Laurent PIERRE et Kaan COSKUN**
34 rue de l Europe 21121 FONTAINE LES DIJON tel 80.56.47.04 - (0)48.04.79.39

Entreprise : **SAEE** Rue des Creuzots BP 609 21016 DIJON cedex tel 80.58.99.30

HA8

Bureau d'Etudes 13 Rue Ste Anne
21000 DIJON

tel 80 30 45 23

fax 80 30 86 63

dessine par :

BU

Dijon le :

15-09-95

responsable :

AL

echelles :

1/20 1/50

dossier :

95050

FONDACTIONS

LONGRINES

ferrallage

(18 feuillets + titre)

page 1

DOE

plan :

04^B

Indice

date

modifications

demandeur

A

11.09.95

compléter plan (pages 19 à 35)

B

20.09.95

Ajouter page 36

CARACTÉRISTIQUES MÉCANIQUES DES MATÉRIAUX

BÉTON

f_{c28} : 25 MPa

ACIERS

Barres H.A. : f_e E50 : $f_e = 500$ MPa

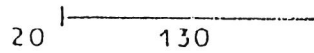
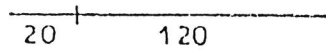
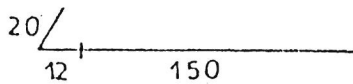
Ronds lisses : f_e E24 : $f_e = 235$ MPa

Treillis soudés : T.S.L. } $f_e = 500$ MPa
T.S.H.A. }

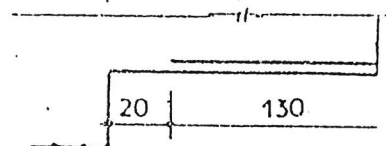
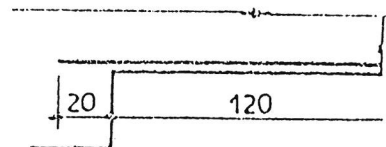
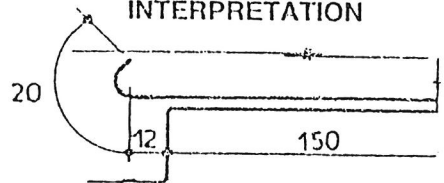
REPRÉSENTATION DES ACIERS

POUTRES dessinées ordinateur

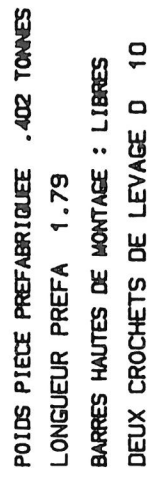
SCHEMA



INTERPRÉTATION



(2 PIECES) 20 X 60 ECHELLE .066 ECHELLE .050
ENROBAGE INFÉRIEUR = 2.5 , ENROBAGE LATERAL = 2.5



35

LG 16

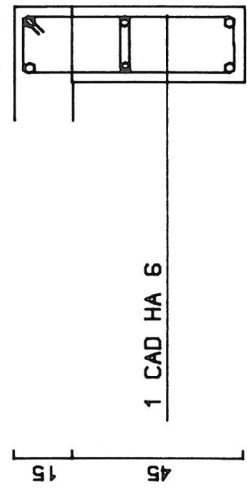
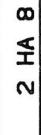
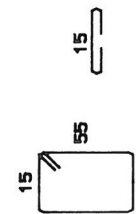
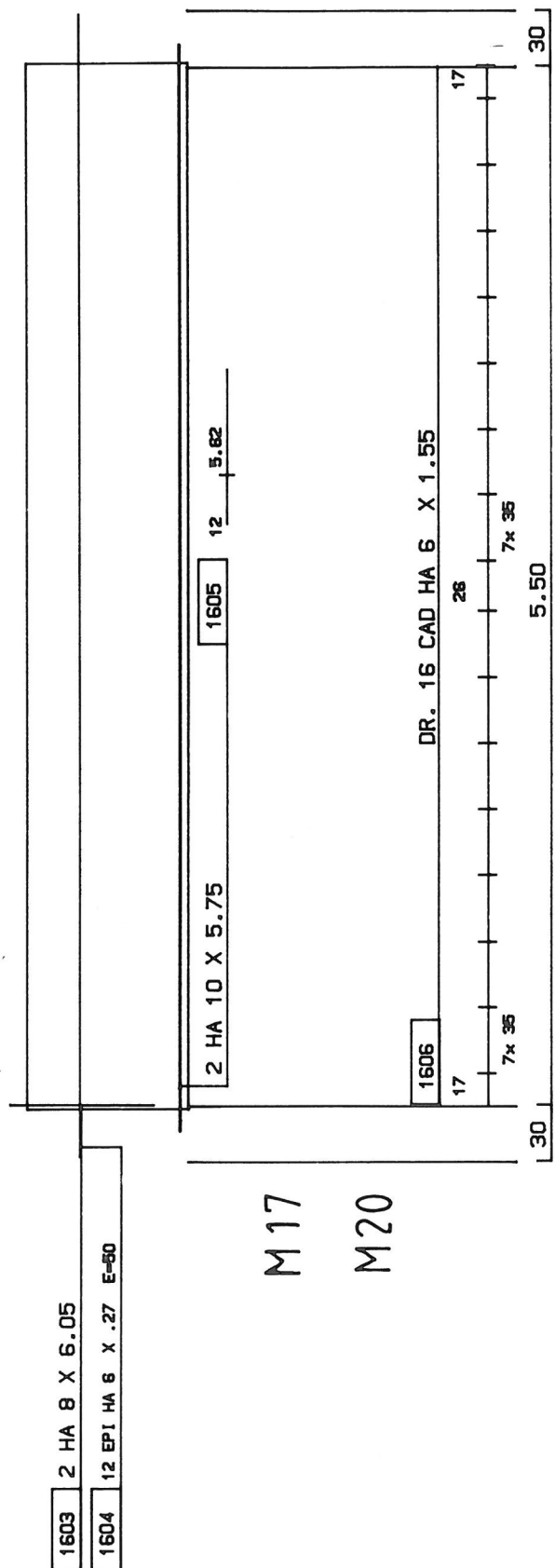
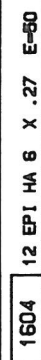
(2 PIECES) 20 X 60

ECHELLE .026

ENROBAGE INTERIEUR = 2.5 , ENROBAGE LATERAL = 2.5

ECHELLE .050

LG 29



POIDS PIECE PREFABRIQUEE 1.246 TONNES
LONGUEUR PREFA 5.54
BARRES HAUTES DE MONTAGE : LIBRES
DEUX CROCHETS DE LEVAGE D 10

1.10, 1.10,

LG 17

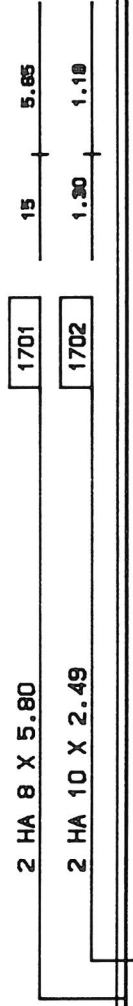
(2 PIECES) 20 X 60

ECHELLE .026

ENROBAGE INTERIEUR = 2.5 , ENROBAGE LATERAL = 2.5

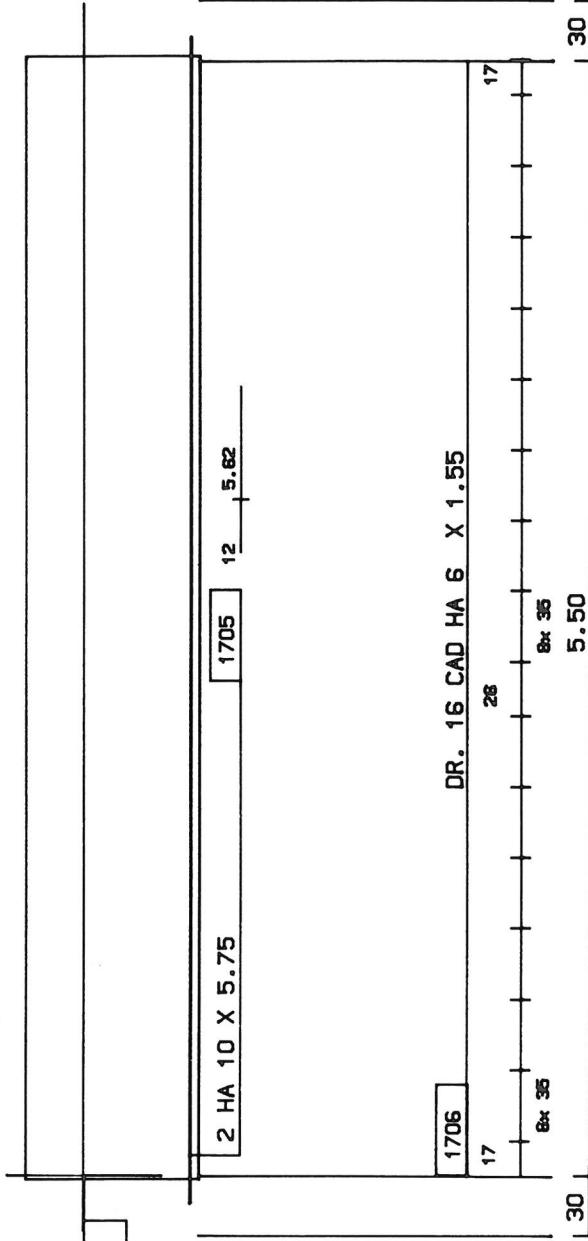
ECHELLE .050

LG 28



1703 2 HA 8 X 6.05

1704 12 EPI HA 6 X .27 E-50



M16

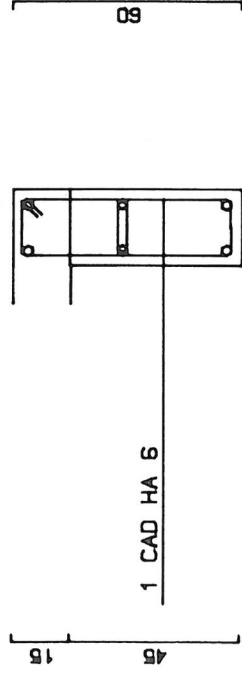
M19

M15

M18



2 HA 8



POIDS PIECE PREFABRIQUEE 1.246 TONNES
LONGUEUR PREFA 5.54
BARRES HAUTES DE MONTAGE : LIBRES
DEUX CROCHETS DE LEVAGE D 10

2 HA 10

1.10, 1.10,

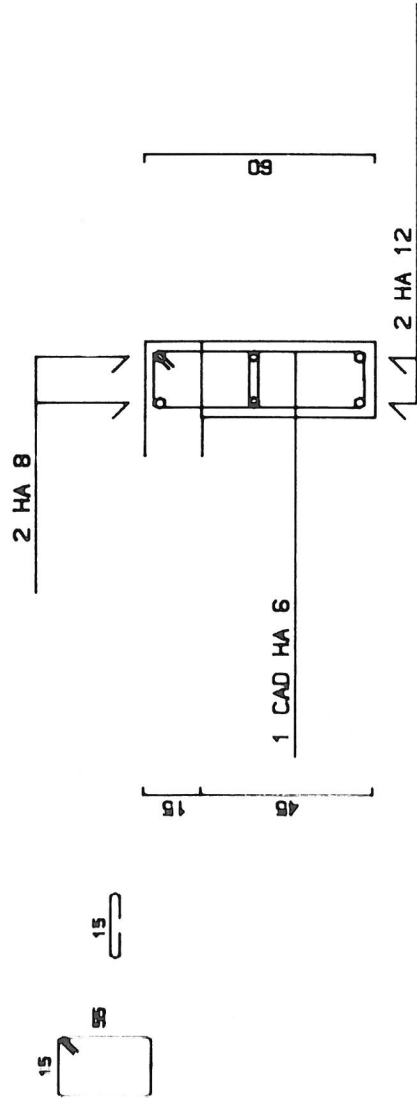
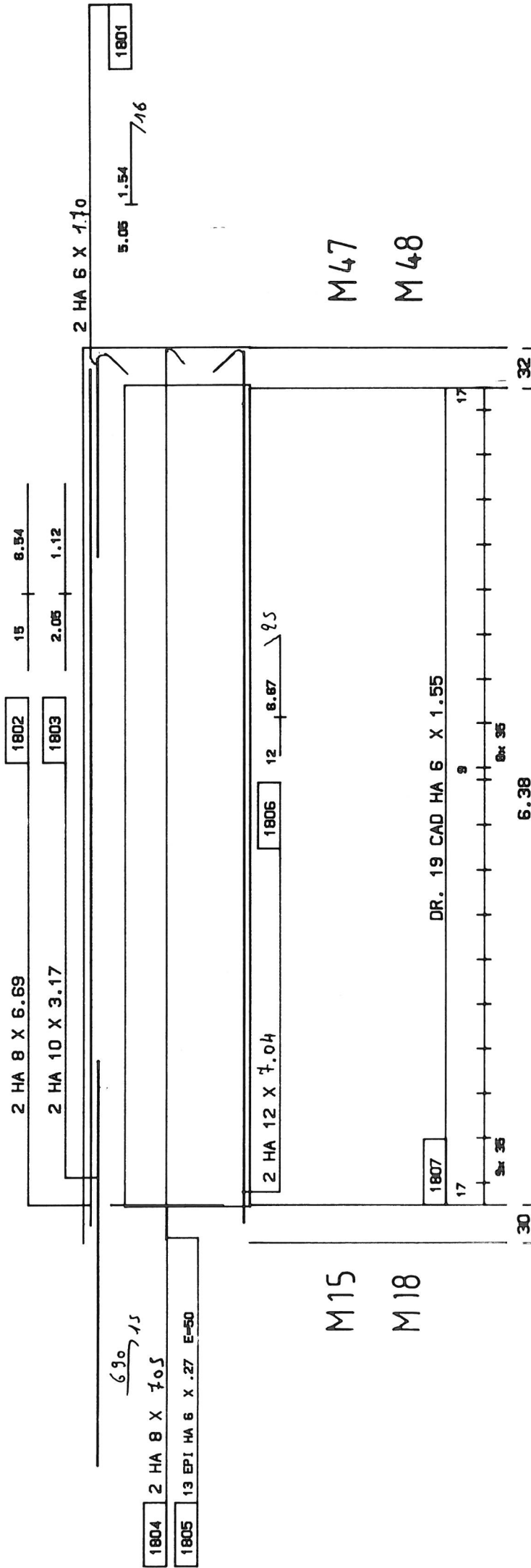
LG 18

ECHELLE .050

ECHELLE .023

ENROBAGE INFÉRIEUR = 2.5 , ENROBAGE LATERAL = 2.5

LG 27



POIDS PIECE PREFABRIQUEE 1.444 TONNES
LONGUEUR PREFA 6.42
BARRES HAUTES DE MONTAGE : LIBRES
DEUX CROCHETS DE LEVAGE D 10

1.28 1.28

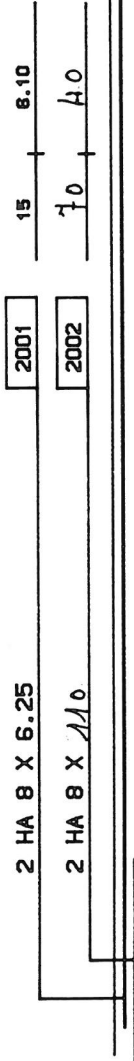
LG 20 - LG 21 - LG 22 (6 PIECES) 20 X 60

ECHELLE .025

ECHELLE .050

ENROBAGE INTERIEUR = 2.5 , ENROBAGE LATERAL = 2.5

LG 23 - LG 24 - LG 25 -

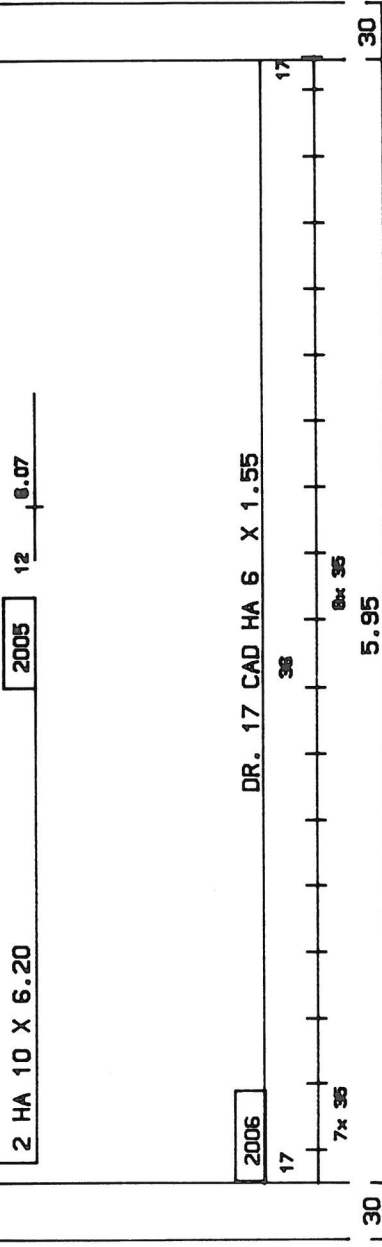


2003 2 HA 8 X 6.50

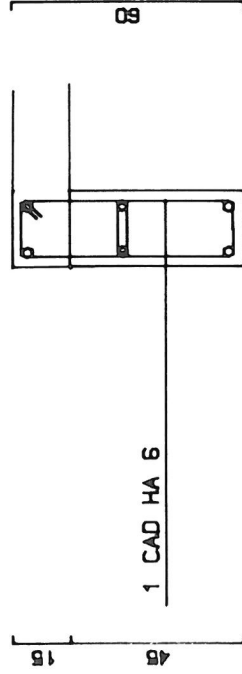
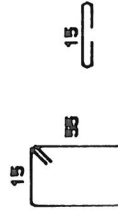
2004 12 EP1 HA 8 X .27 E-80

LG 20 - M1
LG 21 - M2
LG 22 - M3
LG 23 - M4
LG 24 - M5
LG 25 - M6

M2
M3
M4
M5
M6
M7

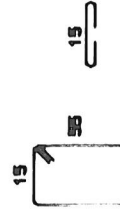
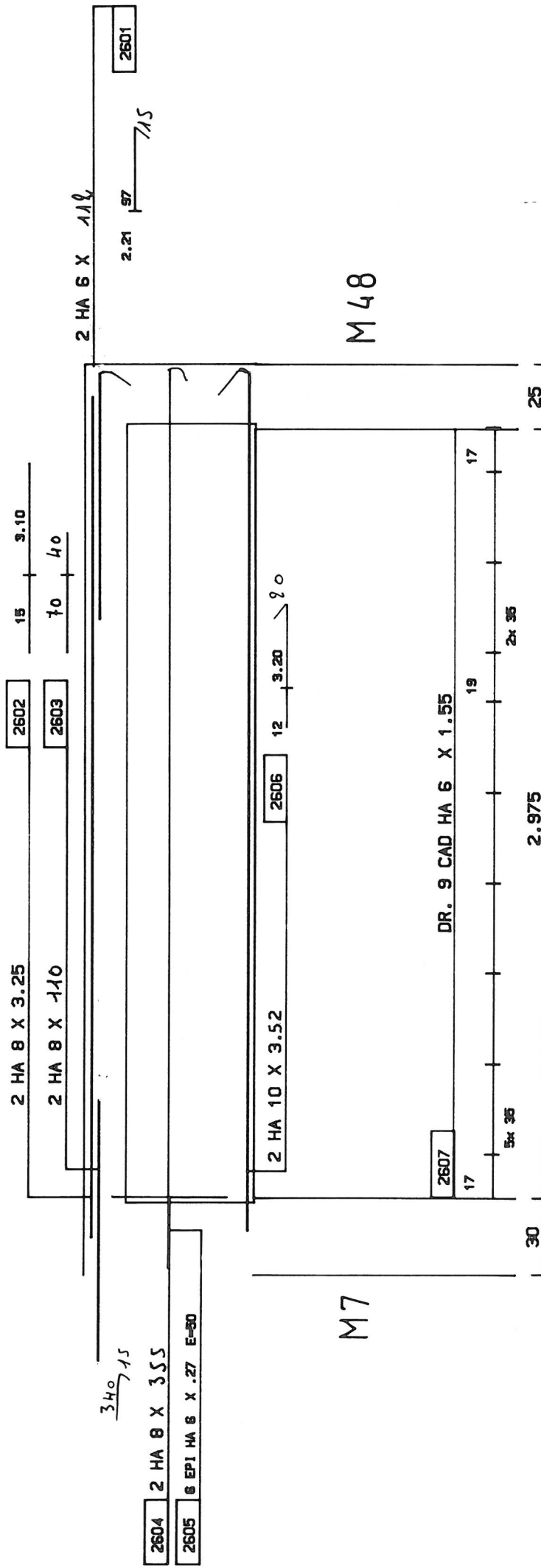


2 HA 8



POIDS PIECE PREFABRIQUEE 1.347 TONNES
LONGUEUR PREFA 5.99
BARRES HAUTES DE MONTAGE : LIBRES
DEUX CROCHETS DE LEVAGE D 10

1.19 1.19



2 HA 8

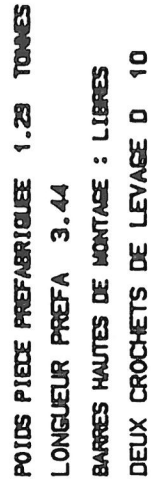
1 CAD HA 6

POIDS PIECE PREFABRIQUEE .678 TONNES
LONGUEUR PREFA 3.01
BARRES HAUTES DE MONTAGE : L'IBRES
DEUX CROCHETS DE LEVAGE 0 10

8

ECHELLE .050

ENROBAGE INFÉRIEUR = 2.5 , ENROBAGE LATÉRAL = 2.5

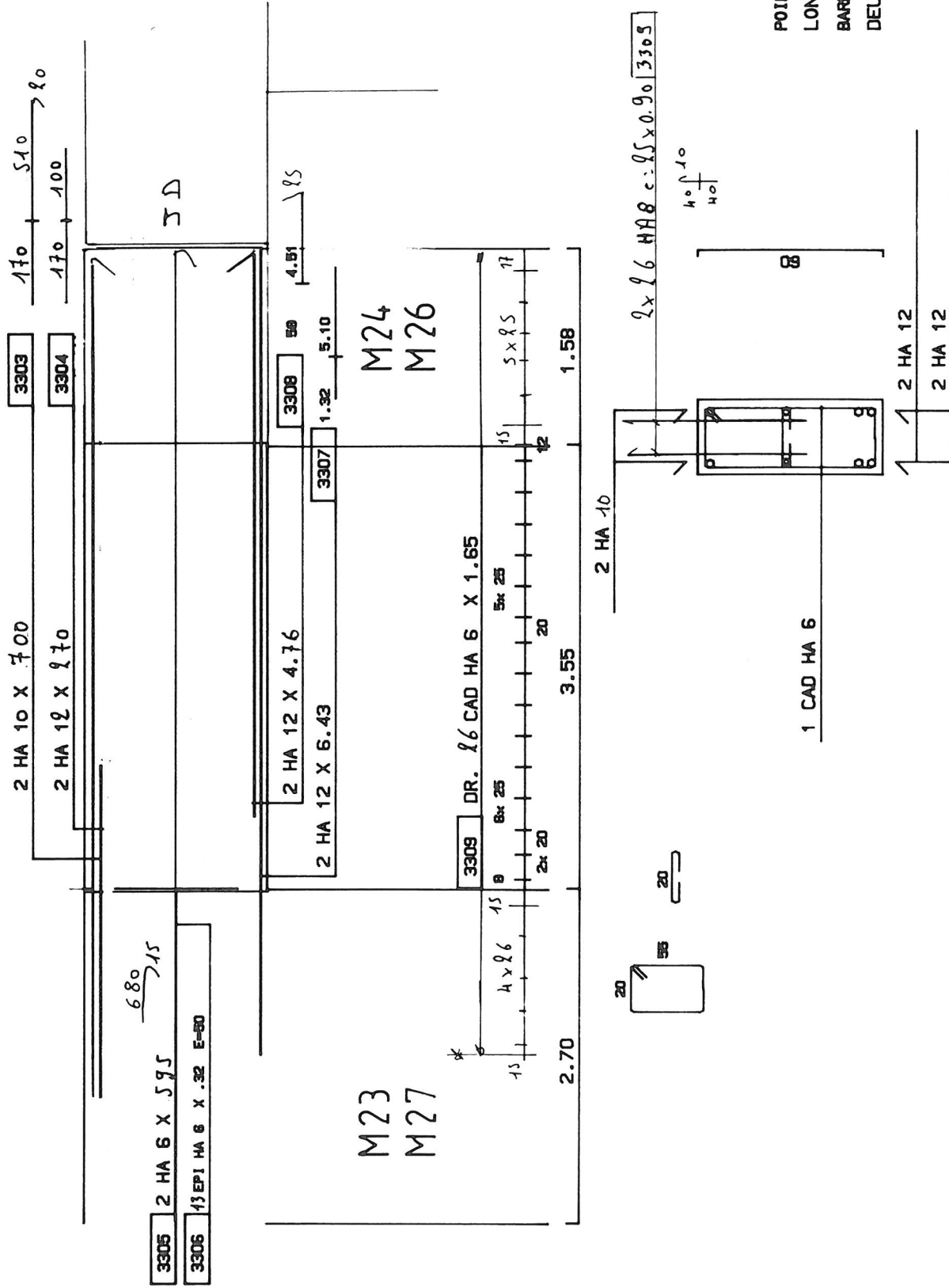


AFFAIRE 1 : SALLE MODULAB

④

LG 33
LG 36

(2 PIECES) 25 X 60 ECHELLE .020 ECHELLE .050
ENROBAGE INFÉRIEUR = 2.5 , ENROBAGE LATERAL = 2.5



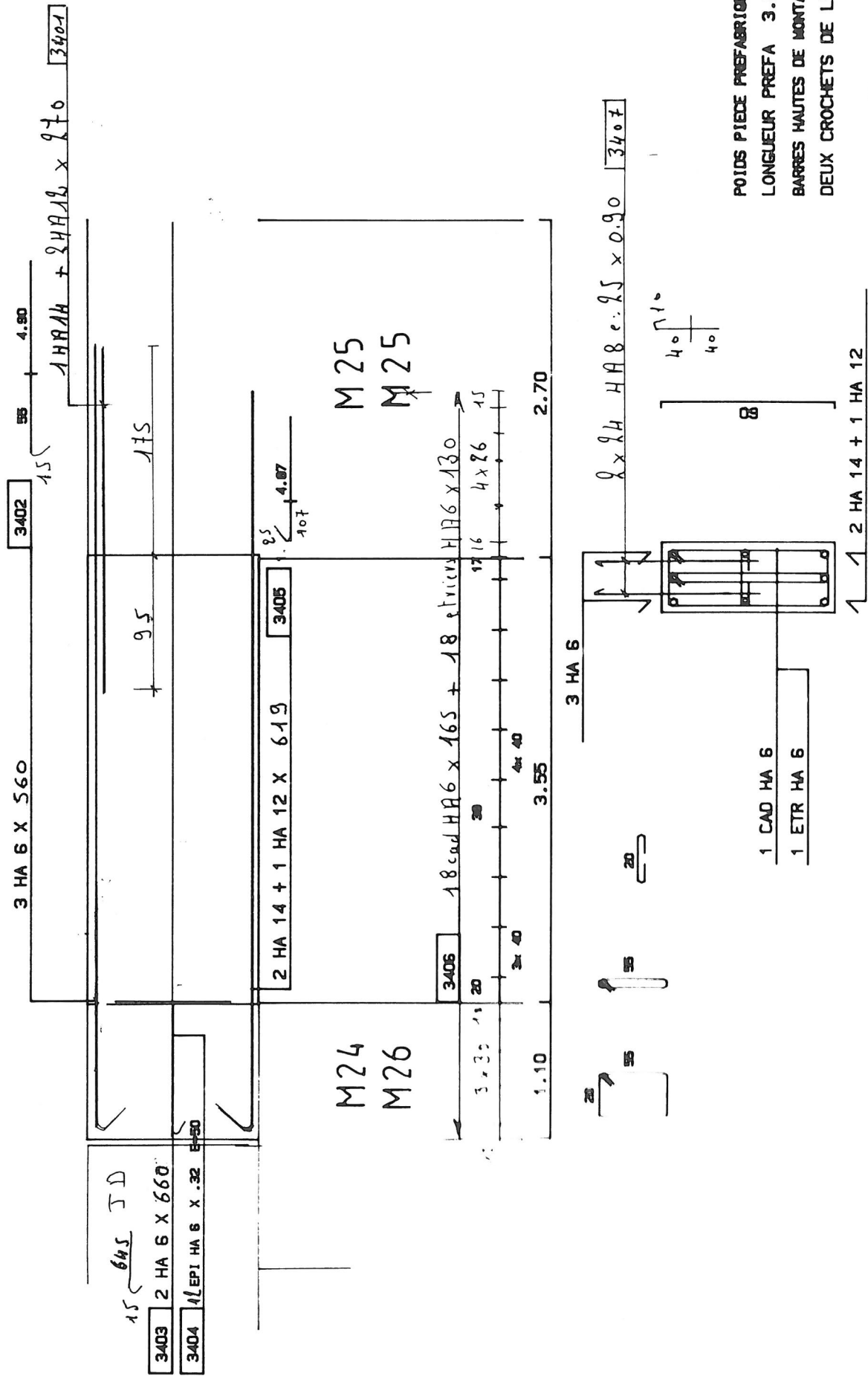
POIDS PIECE PREFABRIQUEE 1.346 TONNES
LONGUEUR PREFA 3.59
BARRES HAUTES DE MONTAGE : LIBRES
DEUX CROCHETS DE LEVAGE D 10

71 71

ECHELLE .050

ENROBAGE INFÉRIEUR = 2.5 , ENROBAGE LATÉRAL = 2.5

7635

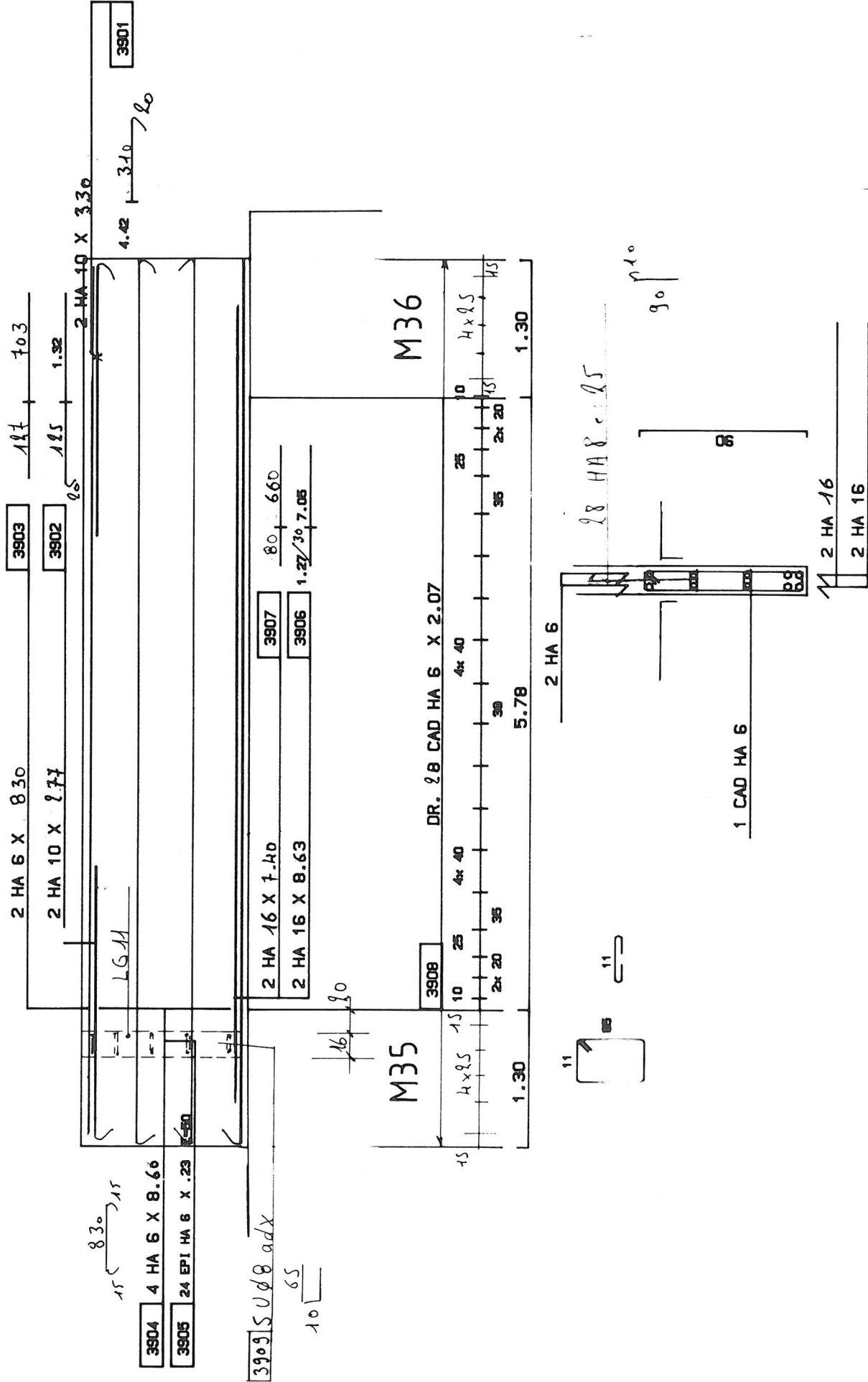


POIDS PIEDE PREFABRIQUEE 1.345 TONNES
LONGUEUR PREFA 3.59
BARRES HAUTES DE MONTAGE : LIBRES
DEUX CROCHETS DE LEVAGE Ø 10

79 . 79 .

LG 39

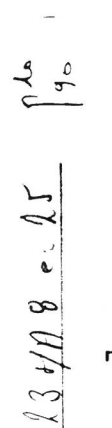
(1 PIECE) 16 X 90 ECHELLE .019 ECHELLE .033
ENROBAGE INFÉRIEUR = 2.5 , ENROBAGE LATERAL = 2.5



ECHELLE .026

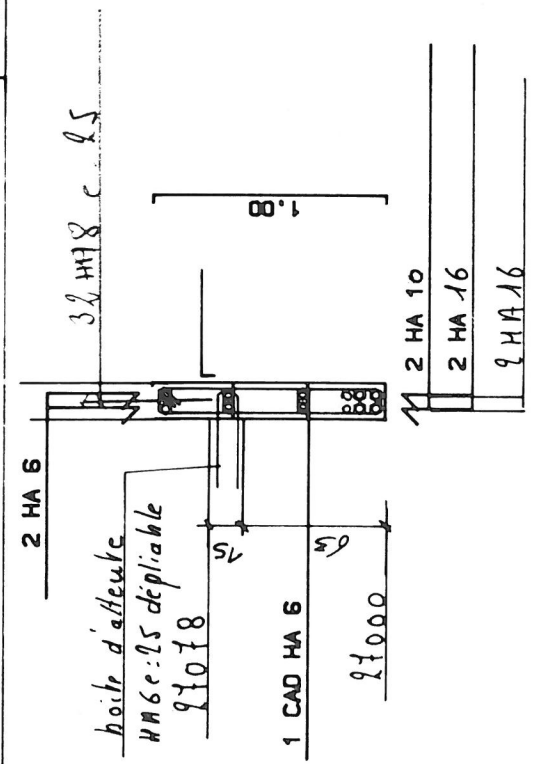
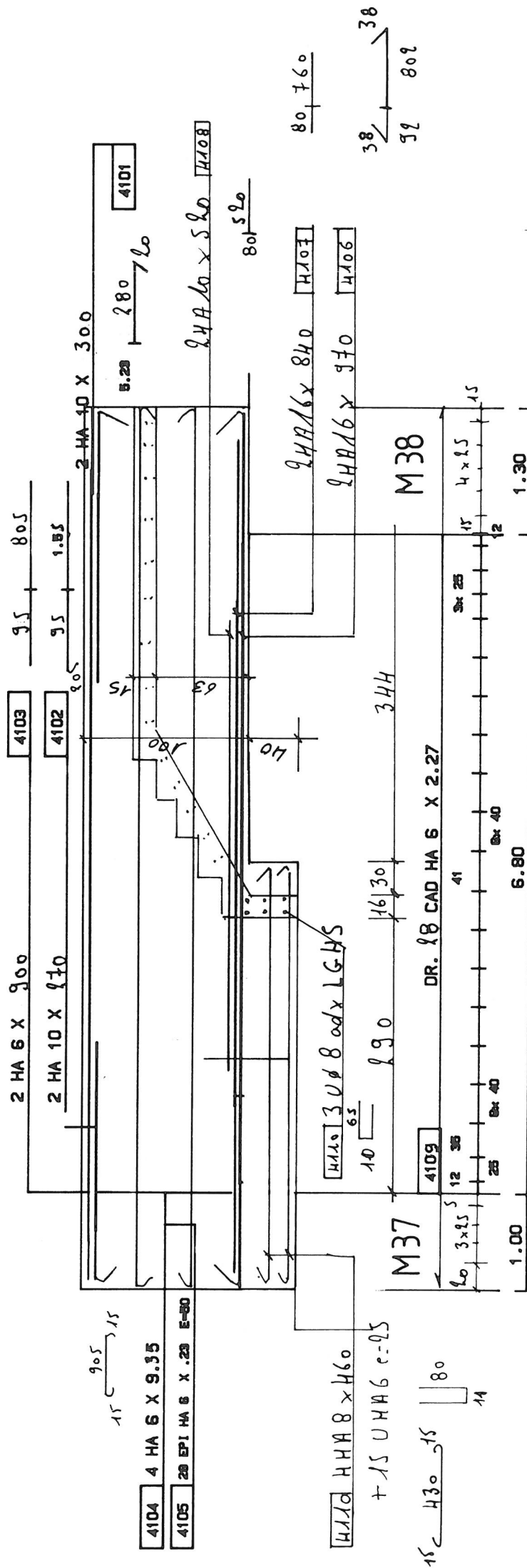
1457

ENROBAGE INTERIEUR = 2.5 , ENROBAGE LATERAL = 2.5



ECHELLE .030

ENROBAGE INFÉRIEUR = 2.5 , ENROBAGE LATÉRAL = 2.5



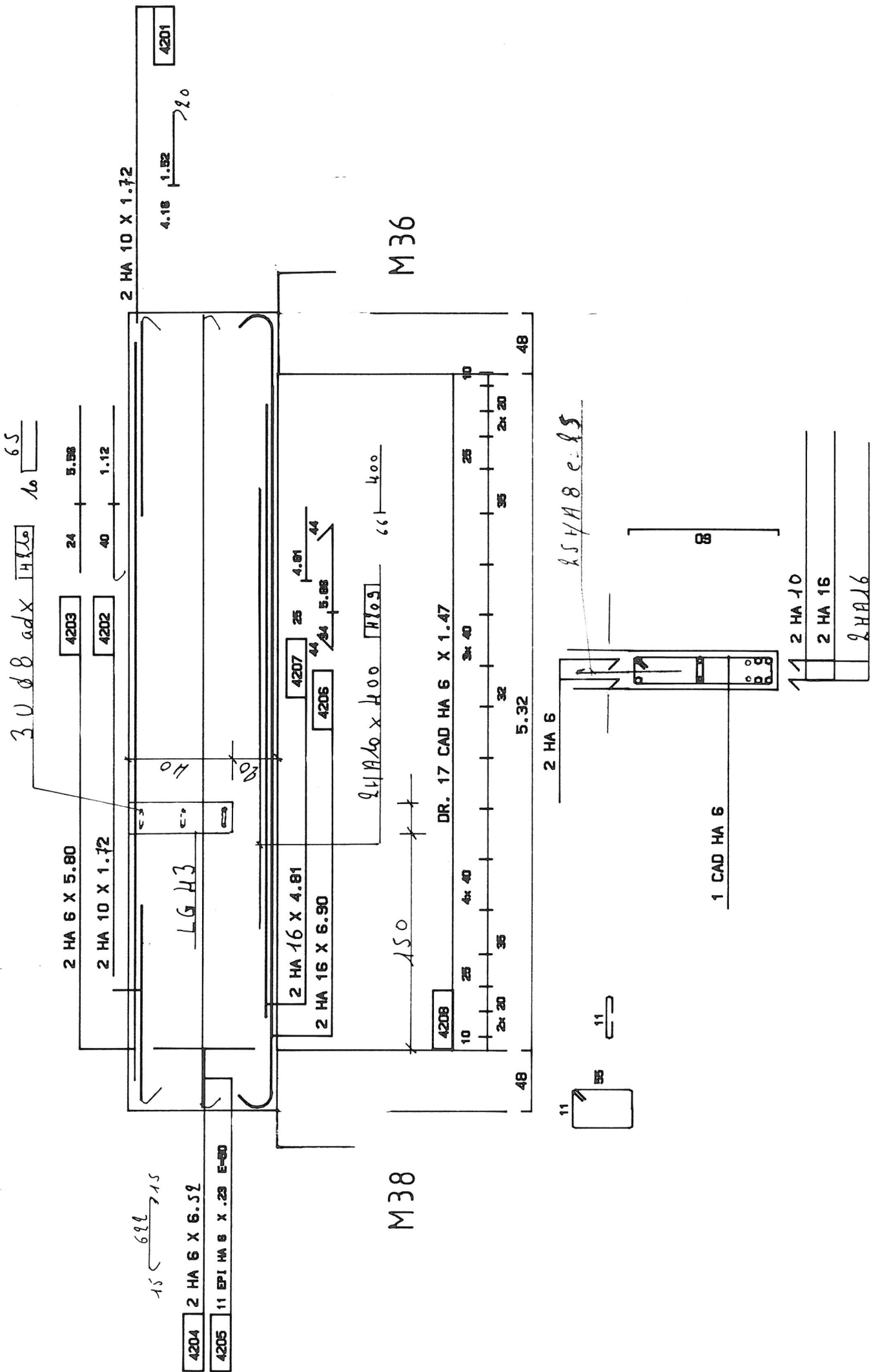
LG 42

(1 PIECE) 16 X 60

ECHELLE .026

ECHELLE .050

ENROBAGE INFÉRIEUR = 2.5 , ENROBAGE LATÉRAL = 2.5

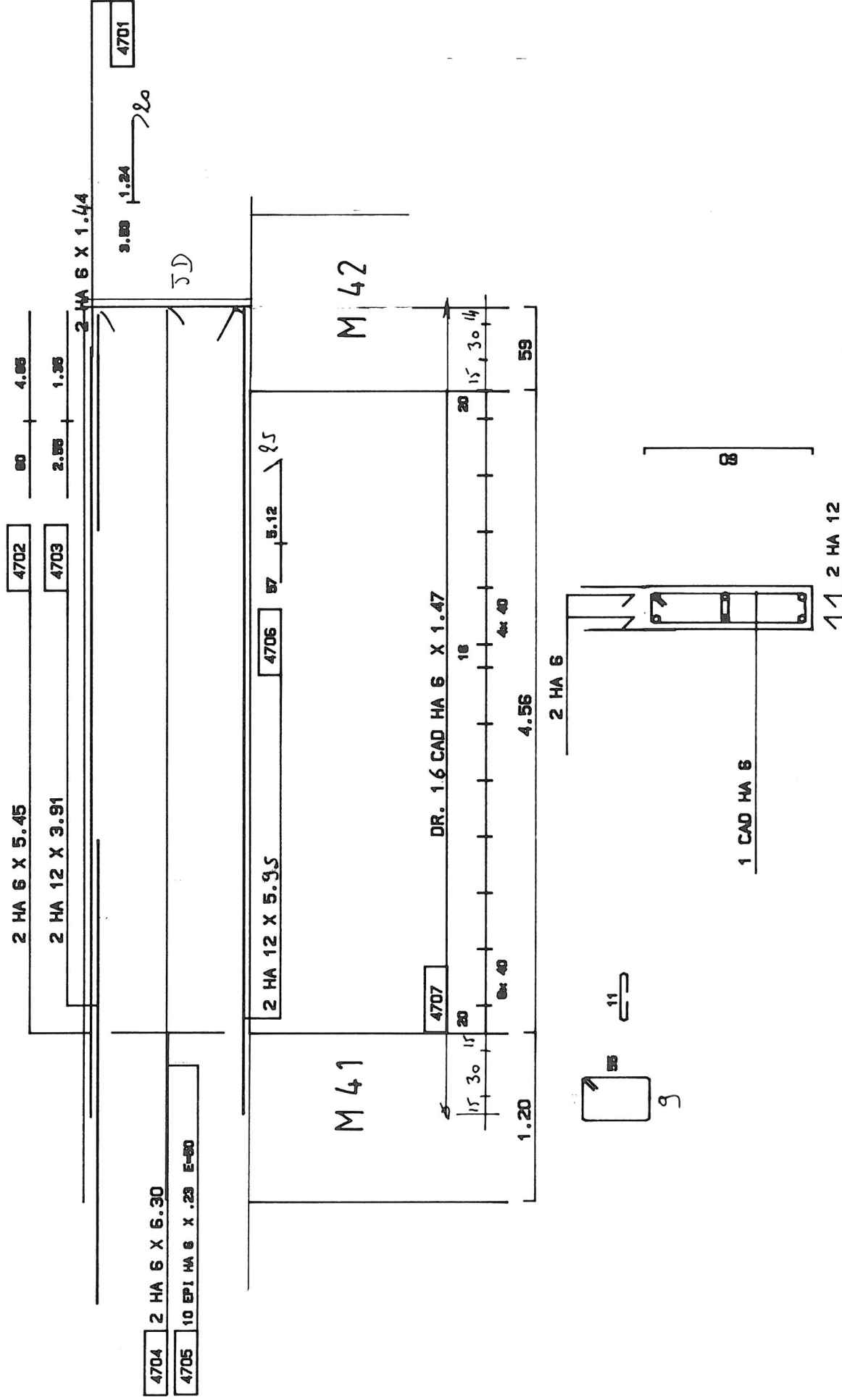


(1 PIECE) 16 X 60 ECHELLE .031 ECHELLE .050
ENROBAGE INFÉRIEUR = 2.5 , ENROBAGE LATÉRAL = 2.5



LG 47

(1 PIECE) 16 X 60 ECHELLE .025 ECHELLE .050
ENROBAGE INTERIEUR = 2.5 , ENROBAGE LATERAL = 2.5

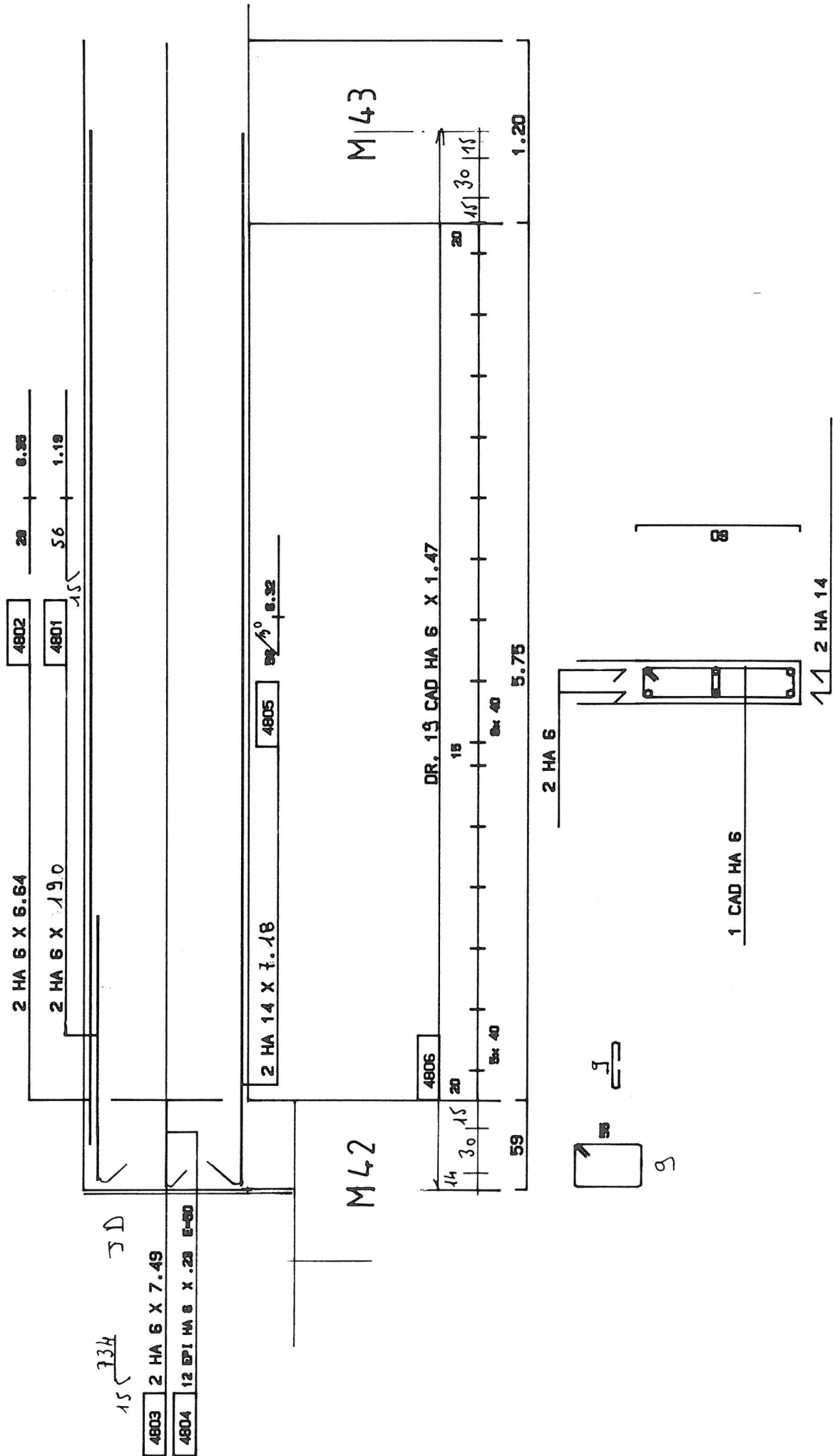


LU 48

(1 PIECE) 16 X 60

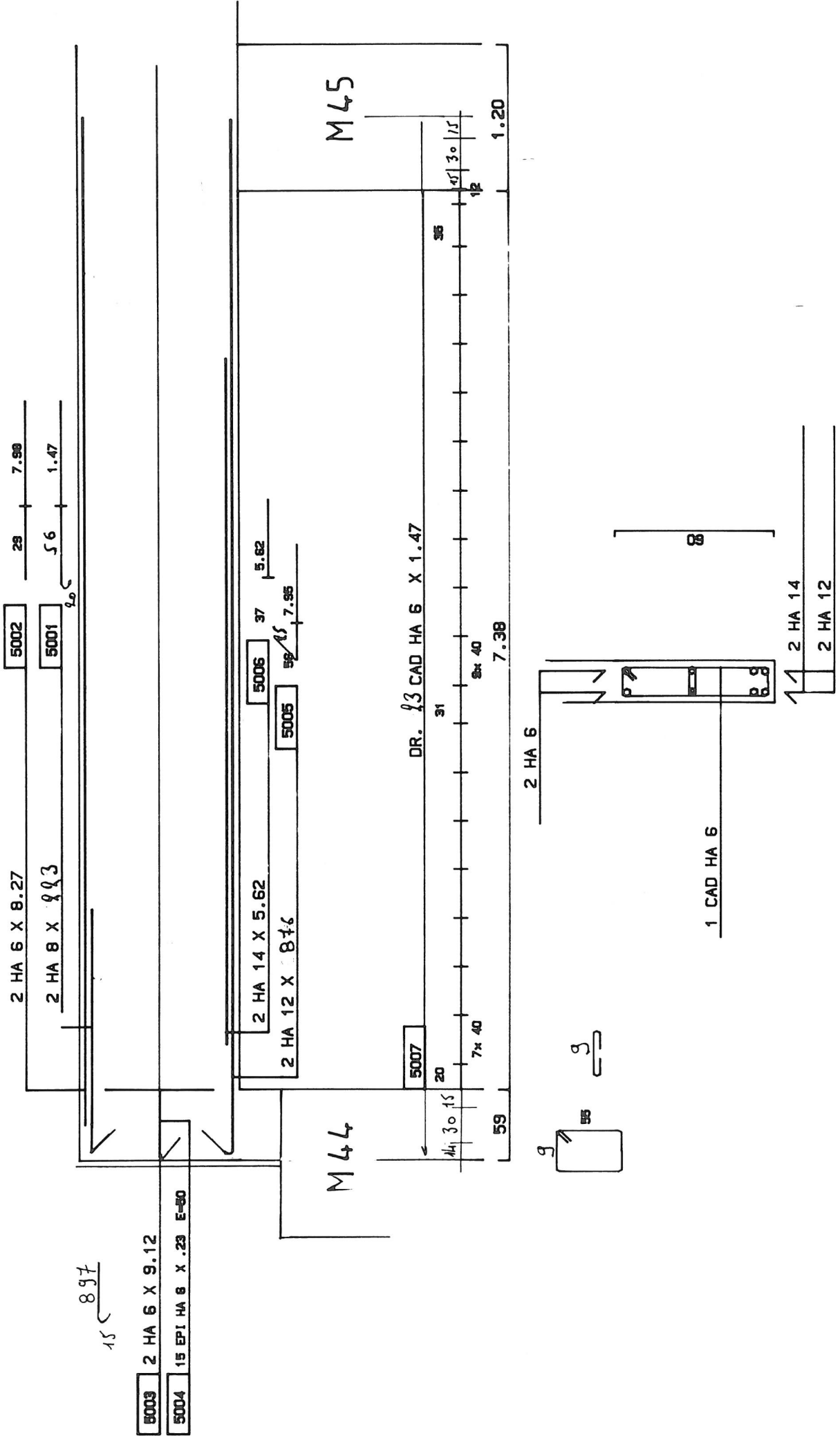
ECHELLE .028 ECHELLE .050

ENROBAGE INFÉRIEUR = 2.5 , ENROBAGE LATERAL = 2.5



LG 50

(1 PIECE) 16 X 60 ECHELLE .023 ECHELLE .050
ENROBAGE INFÉRIEUR = 2.5 , ENROBAGE LATERAL = 2.5



LG 51

(1 PIECE) 16 X 60

ECHELLE .017

ECHELLE .050

ENROBAGE INTERIEUR = 2.5 , ENROBAGE LATERAL = 2.5

5110 2 HA 8 x 100
14 + 28 04 HA 6 x 15

45

2 HA 6 X 8.10

5102

80 7.80

2 HA 14 X 5.21

5103

3.11 2.10

2 HA 12 X 2.83

5104

2.00 83

5105 2 HA 6 X 9.15

5106 15 EP1 HA 6 X .23 E-60

900 15

5.56 240 9

2 HA 8 X 280

240 9

5101

2 HA 12 X 8.80

5107

5.06

2 HA 12 X 5.06

5108

1.47 5.06

M45

M46

5109

DR. 24 CAD HA 6 X 1.47

10 3x25 15

1.20

7.00

1.00

2 HA 6

11 55

11

Variable de 60 à 80

1 CAD HA 6

2 HA 12

2 HA 12

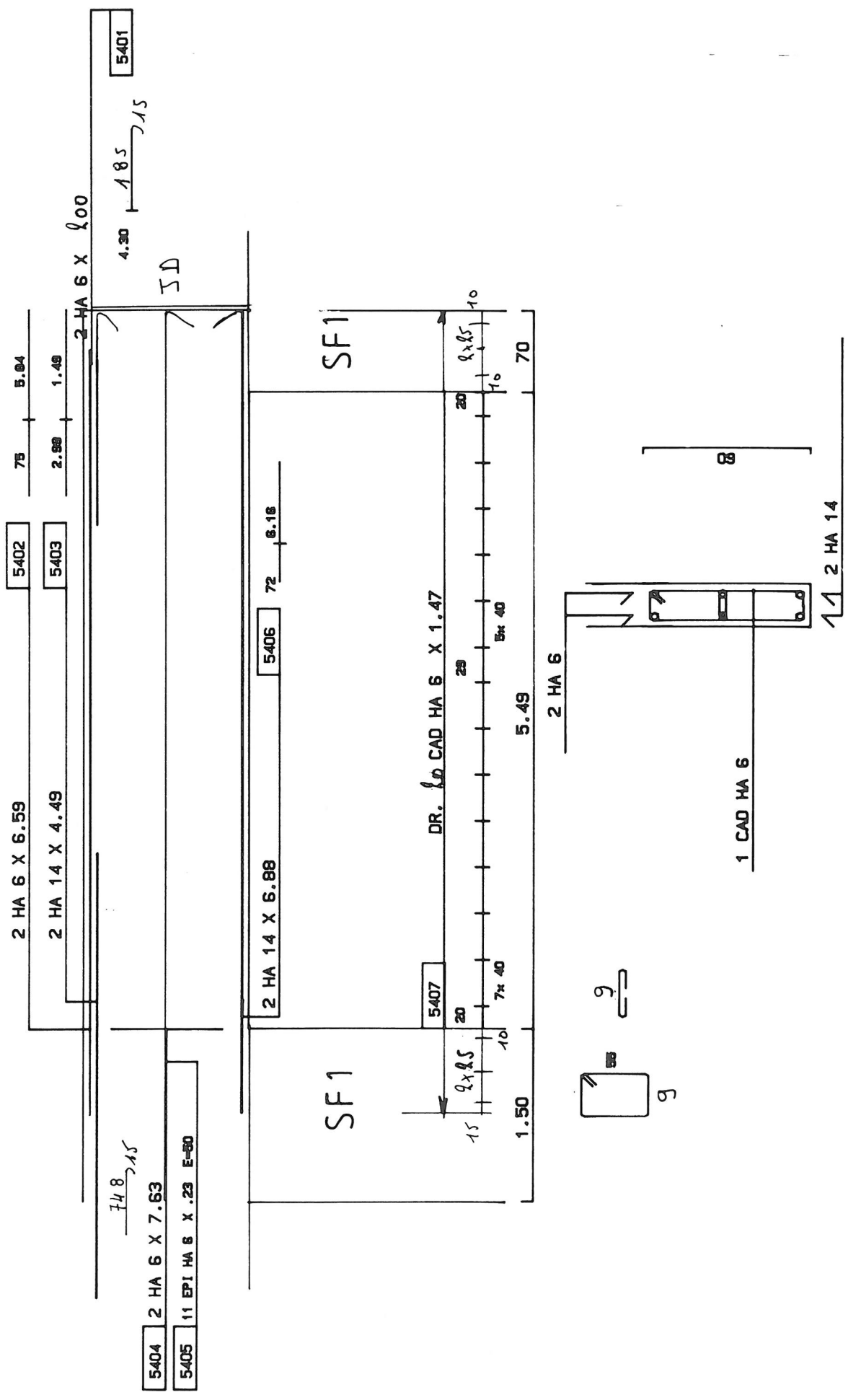
(1 PIECE) 16 X 60 ECHELLE .027
ENROBAGE INFERIEUR = 2.5 , ENROBAGE LATERAL = 2.5

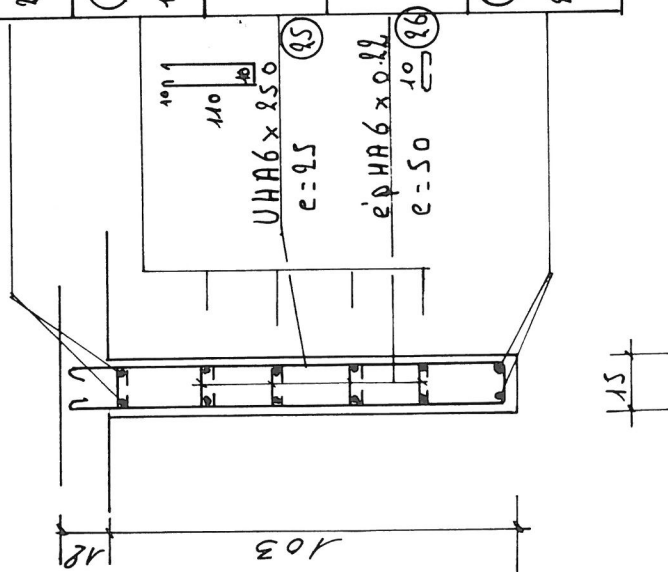
AFFAIRE 1 : SALLE MODULAB

LU 54

(1 PIECE) 16 X 60 ECHELLE .021 ECHELLE .050

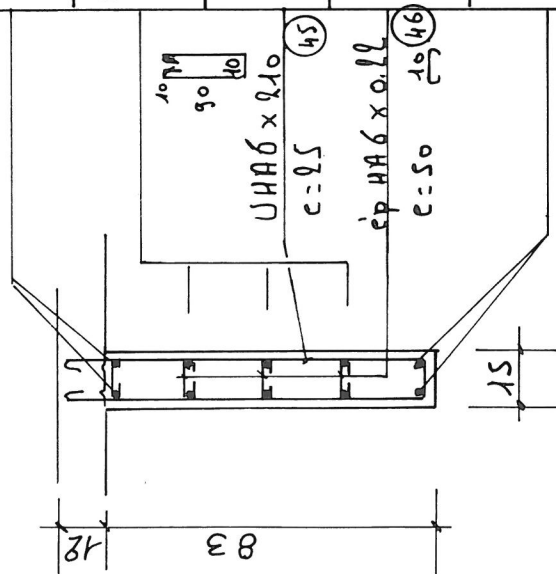
ENROBAGE INFÉRIEUR = 2.5 , ENROBAGE LATERAL = 2.5





LG1	LG2 LG3	LG9a	LG9b LG9c	LG9d	LG9e	LG9f	LG10
① 2HA10 800	④ 2HA10 675	⑦ 2HA10 800 375	⑩ 2HA10 630	⑬ 2HA10 895	⑯ 2HA10 875	⑰ 2HA10 305 30	⑲ 2HA10 800 438
② 8HA6 800	⑤ 8HA6 675	⑧ 8HA6 15 375	⑪ 8HA6 630	⑭ 8HA6 895	⑰ 8HA6 875	⑲ 8HA6 305 15	⑳ 8HA6 15 438
nb 29	nb 23	nb 19	nb 11	nb 9	nb 9	nb 8	nb 17
nb 56	nb 44	nb 24	nb 40	nb 16	nb 16	nb 16	nb 32
③ 2HA12 800	⑥ 2HA10 675	⑨ 2HA10 800 375	⑫ 2HA10 630	⑮ 2HA10 895	⑱ 2HA10 875	⑳ 2HA10 305 80	㉑ 2HA10 800 438

LG4-LG5 LG6-LG7	LG8	LG12a	LG12b LG12c	LG12d	LG13
(27) 2HA10 675	(30) 2HA10 800	(33) 2HA10 630	(36) 2HA10 630	(39) 2HA10 860	(42) 2HA10 445
(28) 6HA6 675	(31) 6HA6 800	(34) 6HA6 630	(37) 6HA6 630	(40) 6HA6 860	(43) 6HA6 445
nb 23	nb 29	nb 12	nb 21	nb 30	nb 18
nb 33	nb 42	nb 18	nb 30	nb 45	nb 27
(29) 2HA10 675	(32) 2HA14 800	(35) 2HA10 630	(38) 2HA10 630	(41) 2HA12 860	(44) 2HA10 445



— LG 11 —

2x6 U d 8 adx 10 65

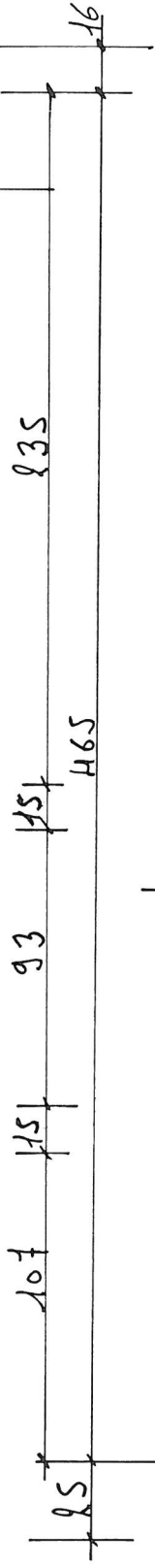
58

attentes dans

LG 31

attentes dans

LG 39.



40/40

53

2x4x8 c: 85

48

HSS

103

15

49

HSS

10

113

50

19x8 HA6x860 c: 85

51

36x8 HA6x860 c: 50

10

15

15

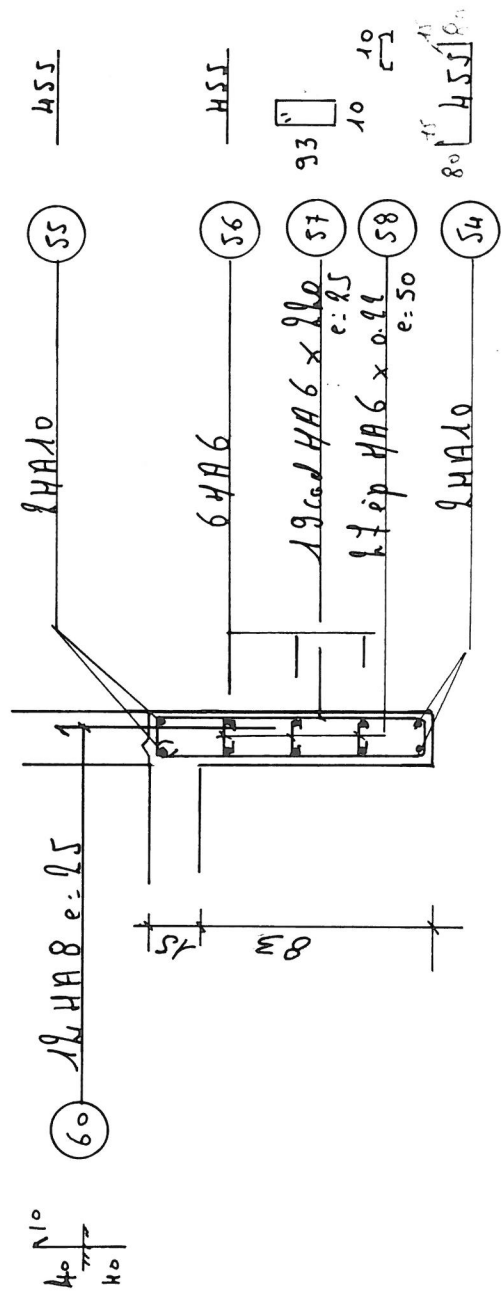
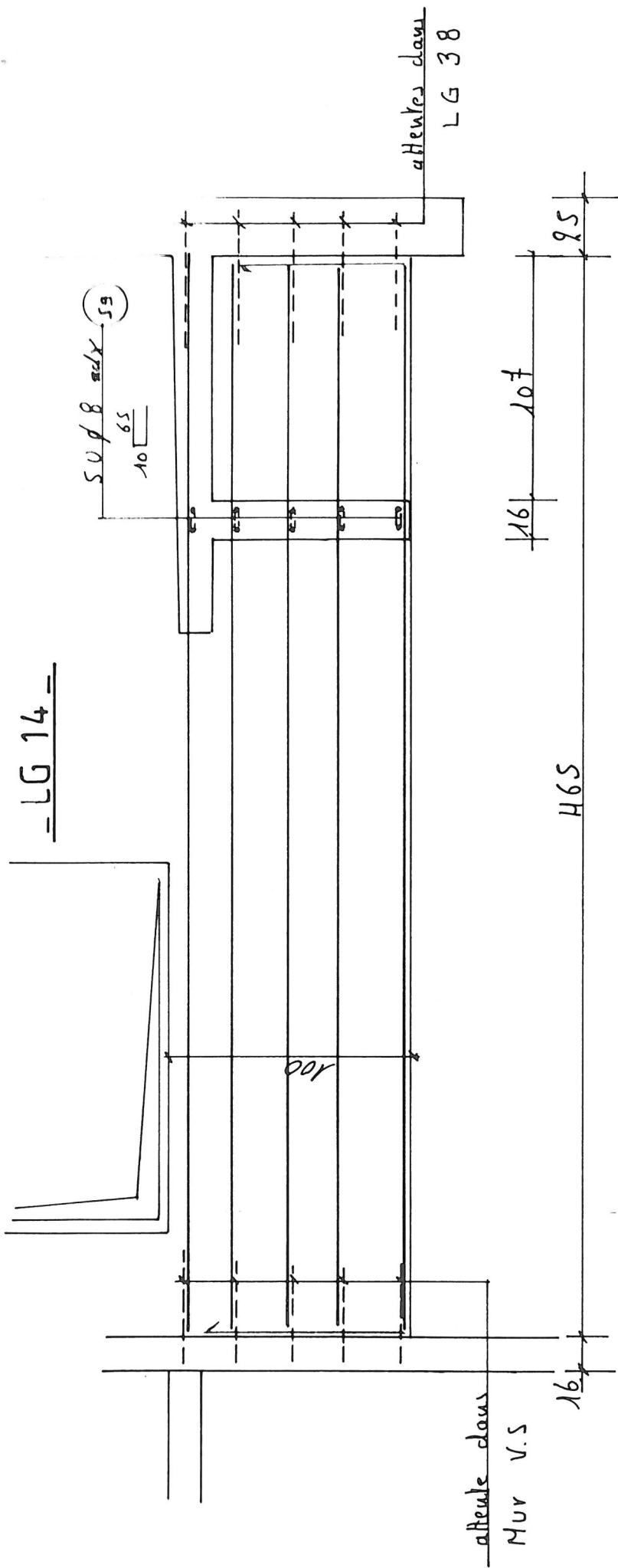
80

HSS

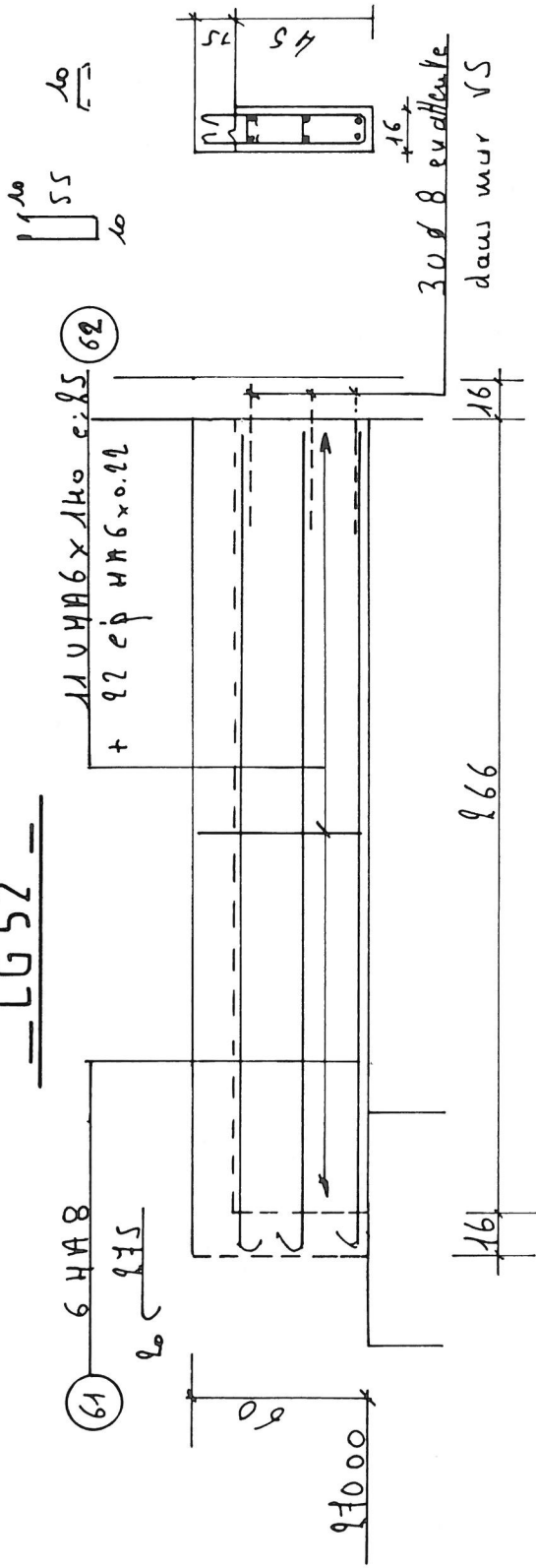
47

2x4x10

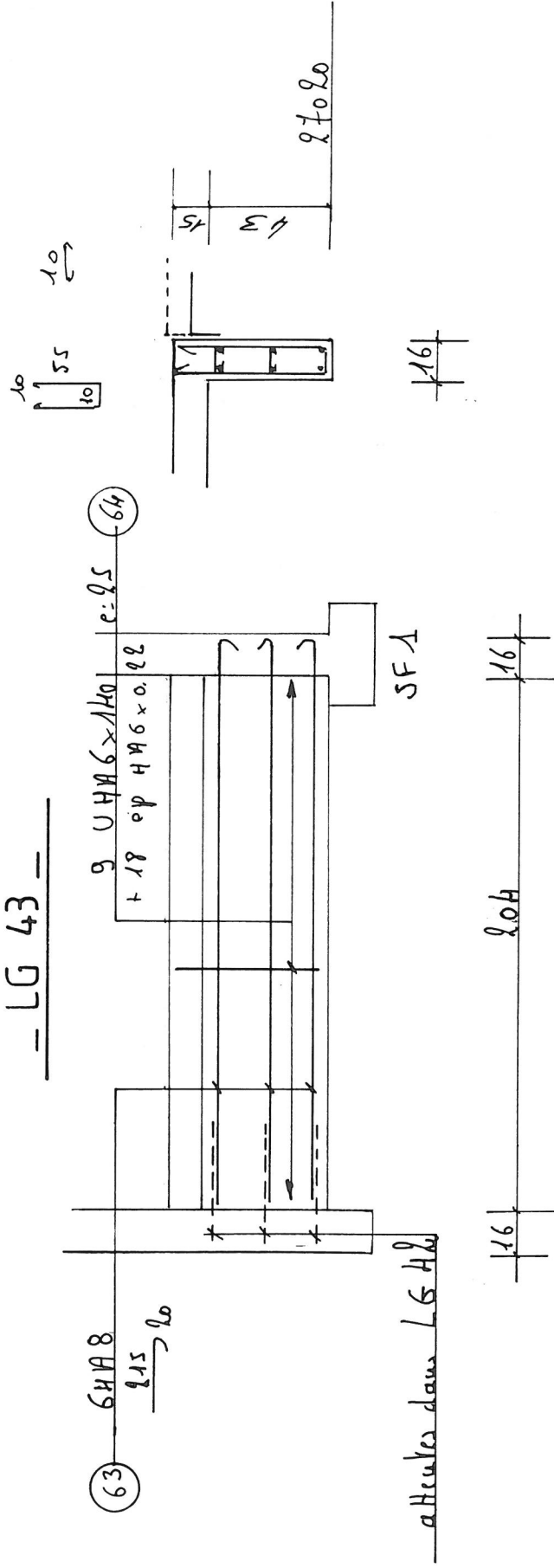
- LG 14 -



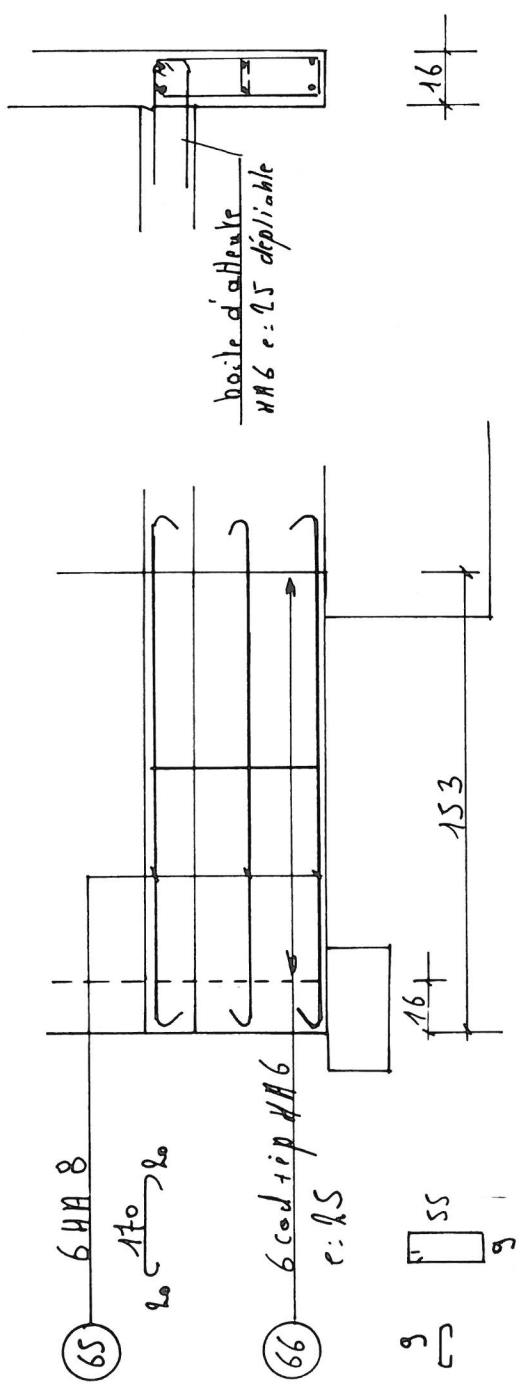
— LG 52 —



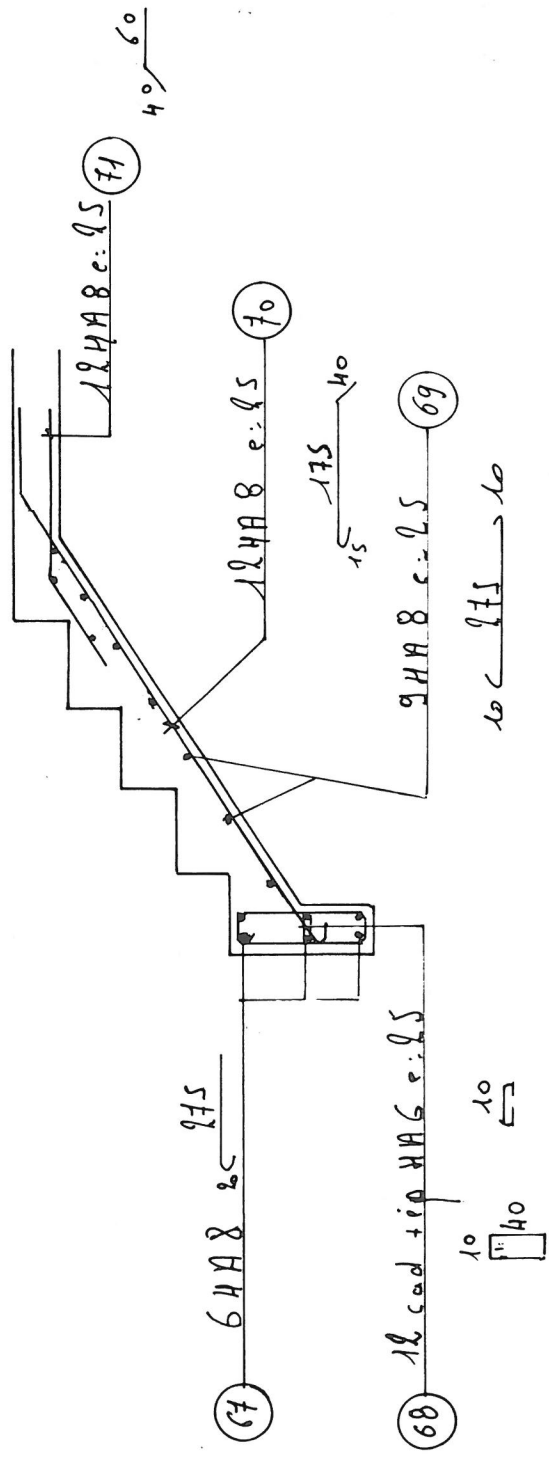
— LG 43 —

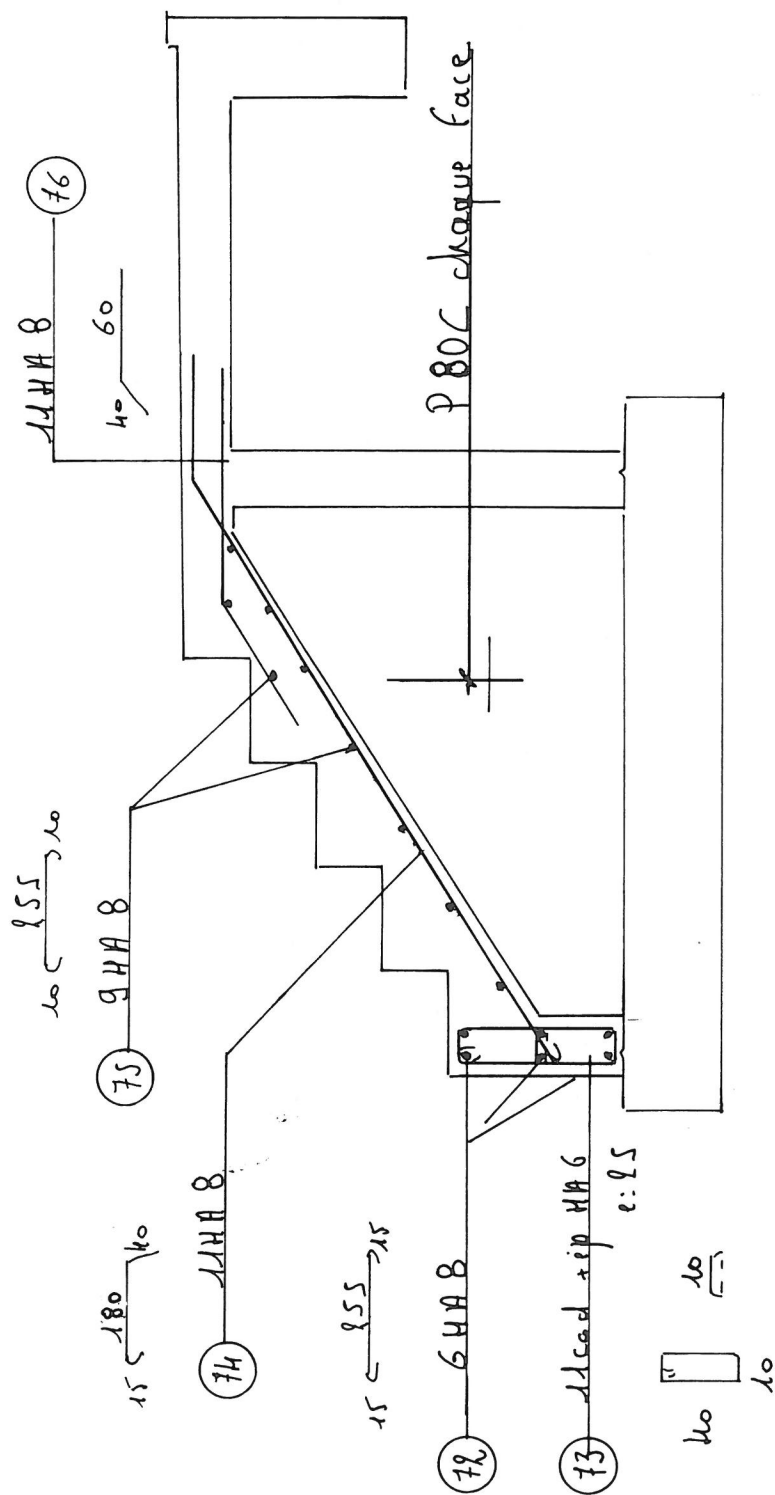


- LG 44 -

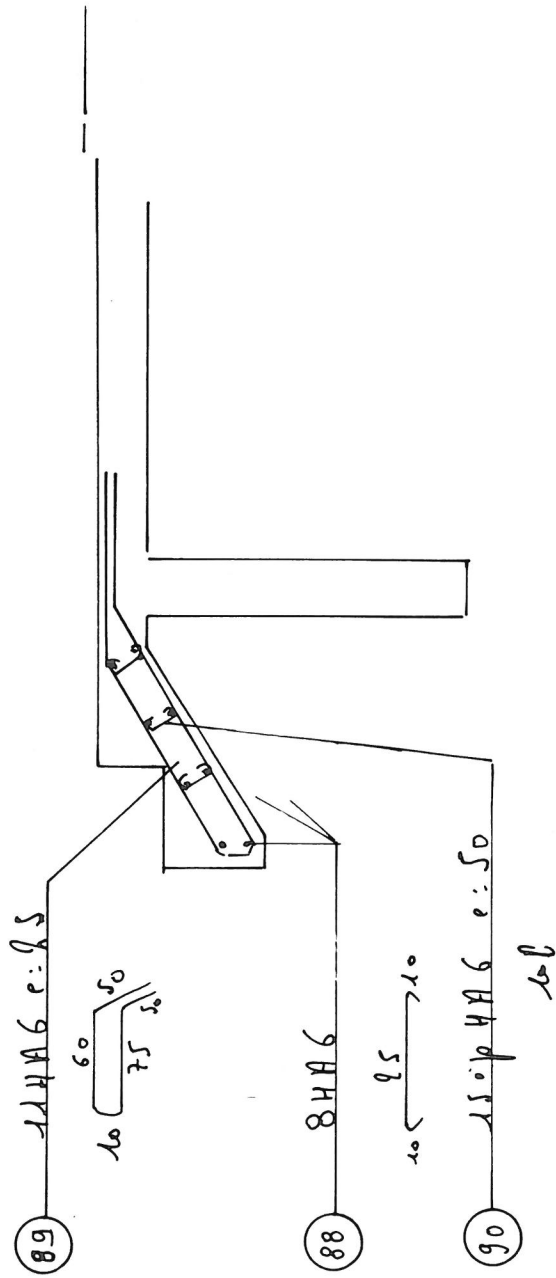


- LG 45 -

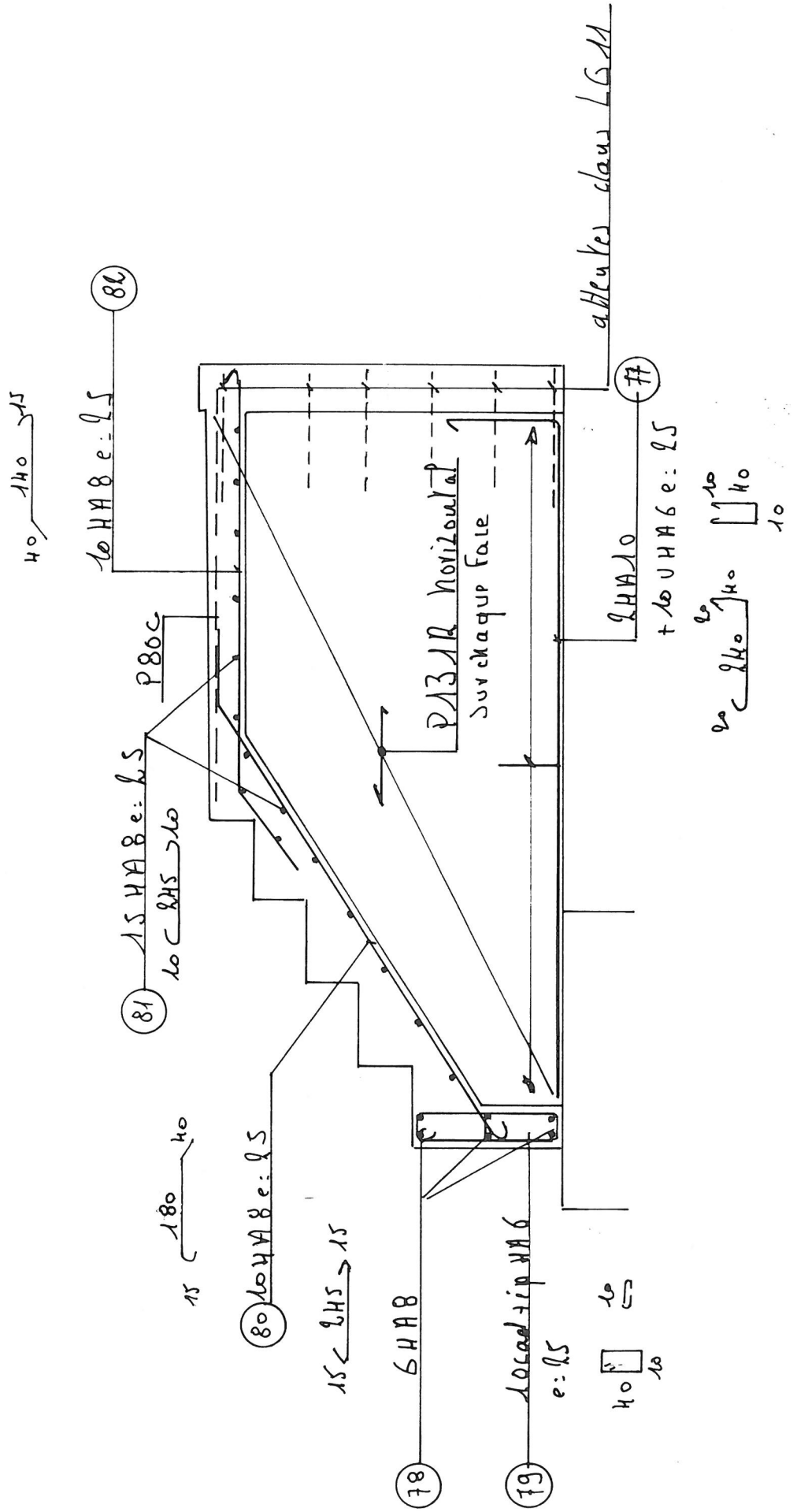




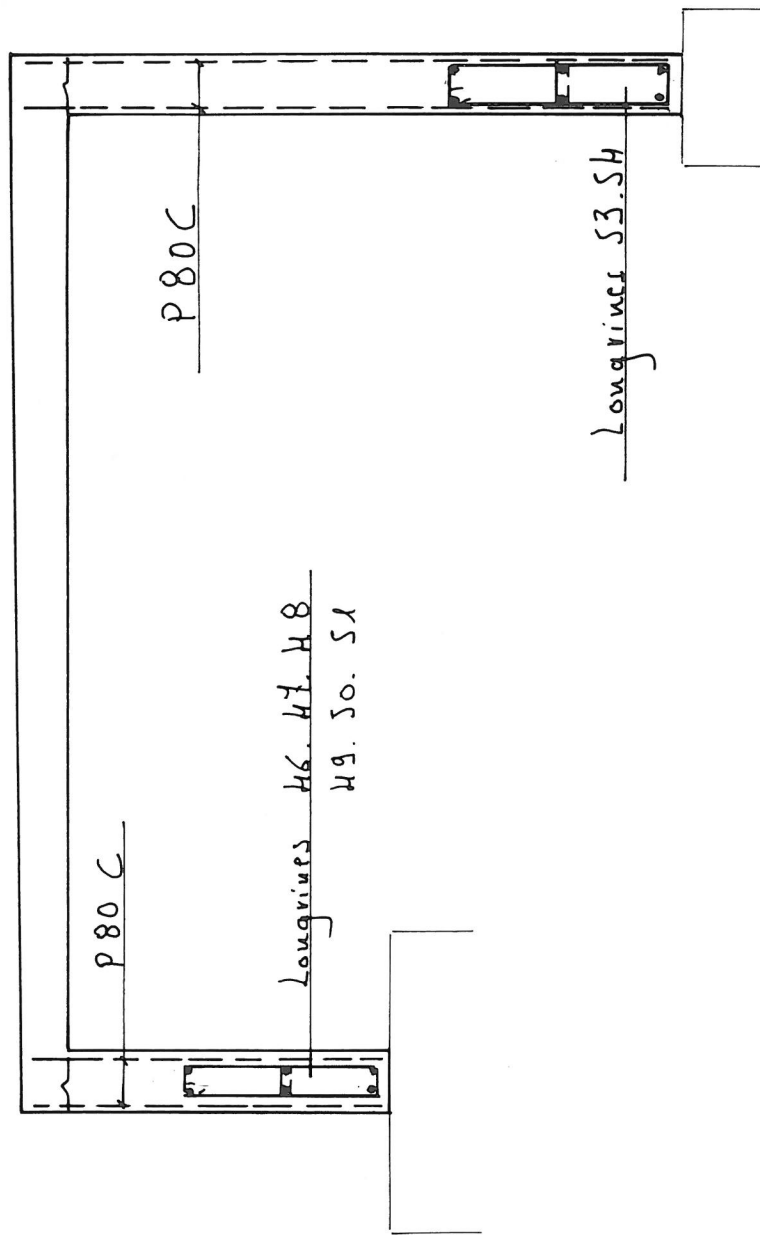
B' - B'



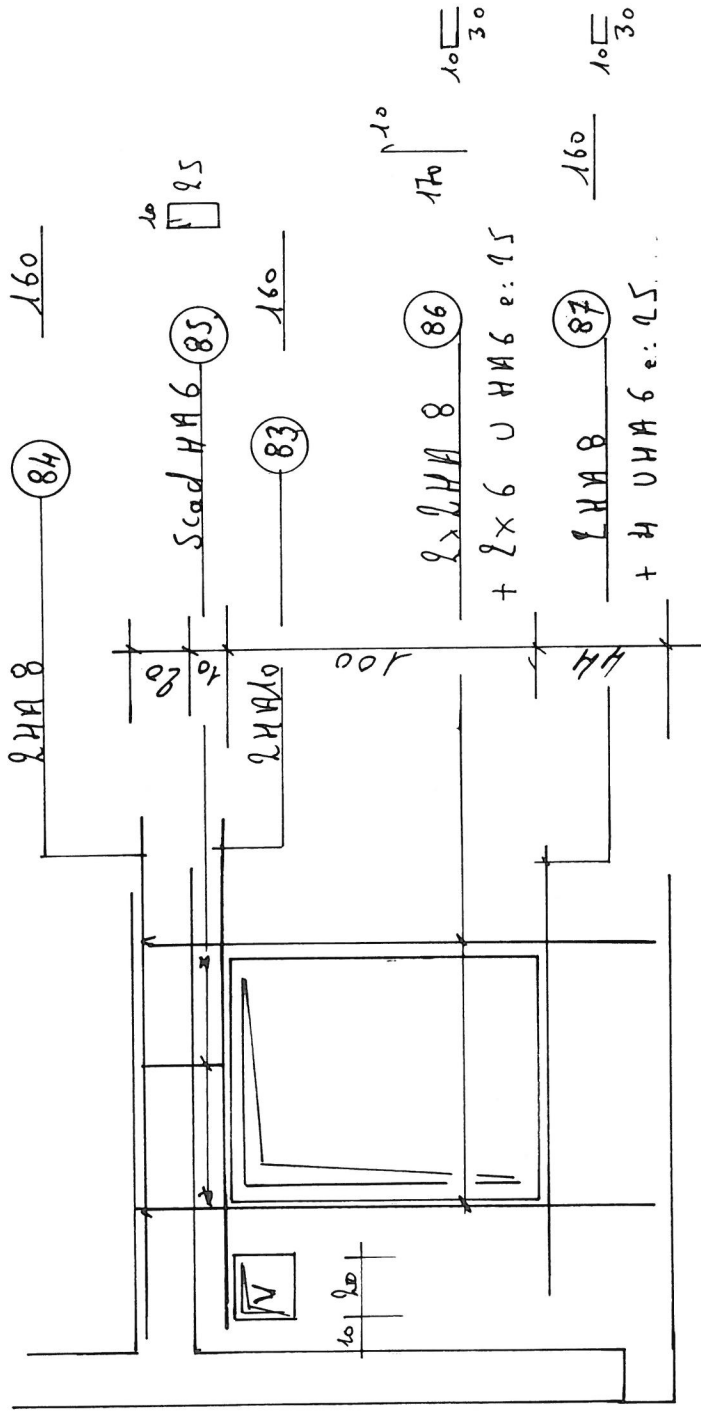
- D. D -



- Coupe F.F -



- Accès VS -



16 | 50 | 80

Poutre voile dans P.H.V.S

